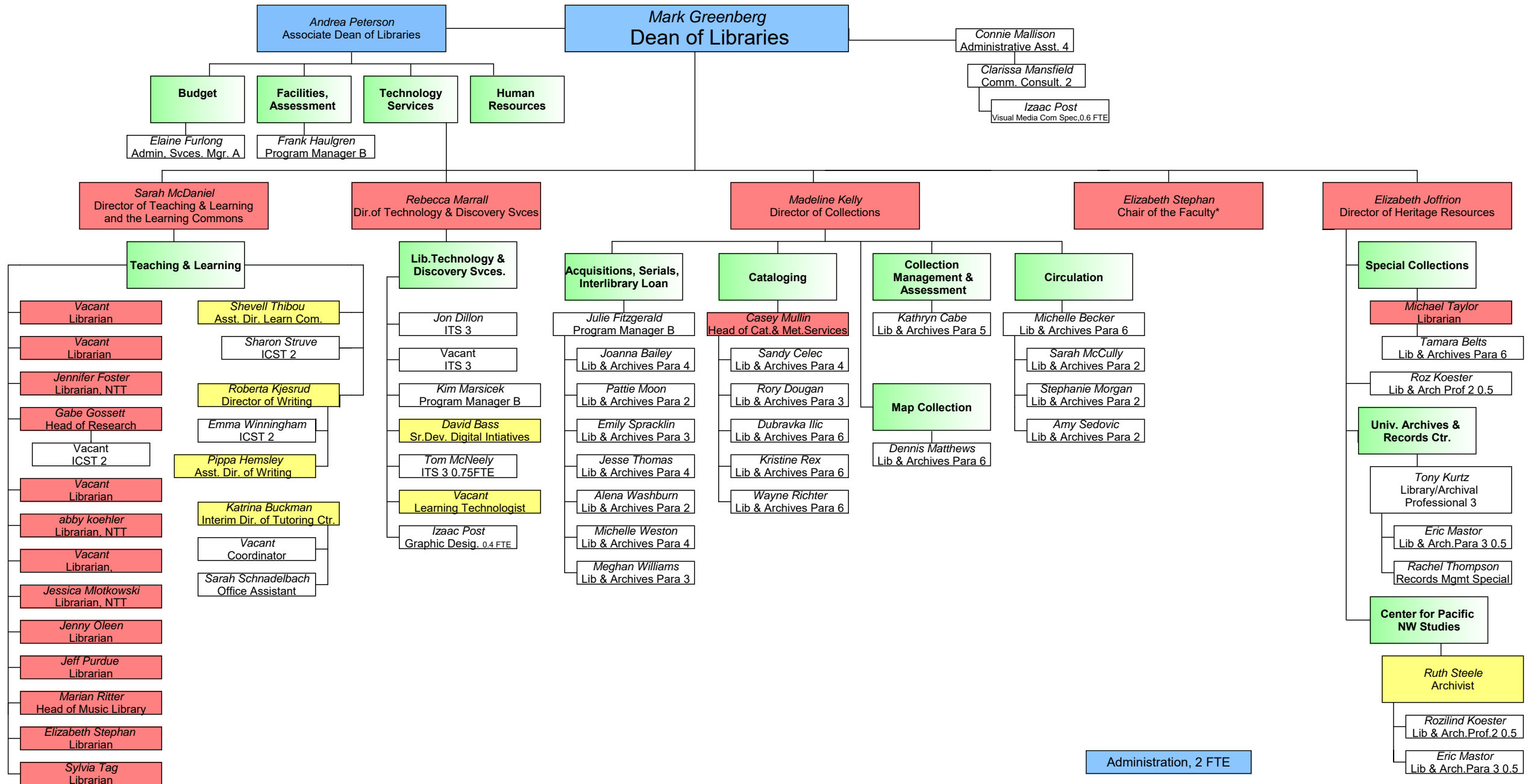


# WESTERN LIBRARIES ORGANIZATIONAL CHART



- Administration, 2 FTE
- Class.Staff, 37.75 FTE
- Faculty\*, 16.33 FTE; 2.0 NTT
- Exempt .Staff, 7 FTE
- Function

\*The Chair of Faculty performs duties related to personnel identified in red boxes, in accordance with CBA Section 17.3